

Tobler Top Concreting Platform



- Maximum safety
- Clean formwork without the cleaning effort
- Safe transport with low transport volume
- Maximum speed with simple self-locking setup
- System is compliant with the 2022 construction work regulations



Swiss Engineering.
Swiss Technology.

Tobler Top Concreting Platform

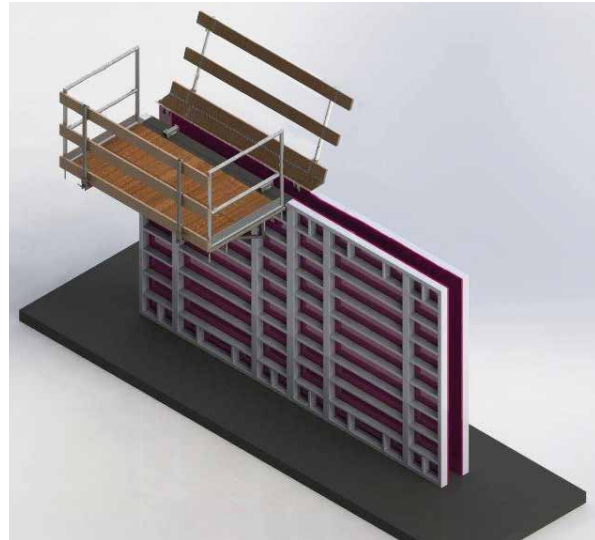
Perform concrete work faster and safer.

Maximum safety and speed

Maximum safety

The tried-and-tested Tobler Top system with concreting platform and opposing guardrail offers workers maximum protection and makes concreting clean and efficient.

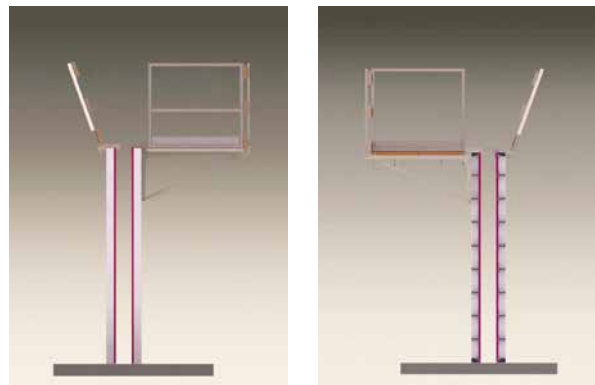
Smooth working procedures allow you to achieve the highest possible work pace and adhere to deadlines.



Maximum work speed

The super-fast insertion method with «click-clack effect» allows you to set up the platform in the shortest time possible.

The unique and extremely reliable anti-fall protection allows you to combine safety and speed and achieve maximum efficiency.



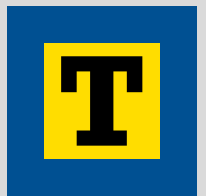
Structural benefits of the Tobler Top concreting platform with opposing guardrail:

- Assembled and disassembled in seconds
- Strong and durable
- Reliable anti-fall protection
- 3-way safety
- Integrated dirt protection
- No need to clean the formwork
- Optimal support and anchoring
- Universal face seal
- Space-saving storage



Tobler Top Concreting Platform

Perform concrete work faster and safer.



Concreting platform

A major benefit of the Tobler Top concreting platform is that it is set up on the wall formwork from above, secures itself, and is then supported high up on the wall formwork by means of folding scaffolding brackets.

The carefully matched support for the concreting platform and the wall formwork ensures continuous work, with no conflicts with anchor holes or props.



- Concreting platform

| Article no. | Length | Width | Weight | Max. load |
|-------------|--------|--------|--------|-----------------------|
| 84-Z-220235 | 235 cm | 120 cm | 143 kg | 200 kg/m ² |

Opposing guardrail

The German Construction Work Ordinance BauAV 2022 stipulates that an opposing guardrail must be used at work heights of 2 m and above.

Tobler Top opposing guardrails offer three-way protection to people and materials and are suitable for use with various formwork systems.



- Opposing guardrail

| Article no. | Length | Width | Weight |
|-------------|--------|--------|---------|
| 84-Z-223235 | 235 cm | 120 cm | 32.5 kg |

Tobler Top Concreting Platform

Perform concrete work faster and safer.

Anti-fall protection

The Tobler Top concreting platform provides maximum safety during movement owing to its integrated anti-fall protection.

When set down by a crane, the platform secures itself automatically.



Integrated dirt protection

The integrated rubber lip prevents concrete from getting between the concreting platform and the formwork. This prevents the need for cleaning.



End panel

The end panel is hooked directly into pre-drilled edge-protection elements, thus offering maximum protection against unintentional lateral falls.

End panels can be used universally.

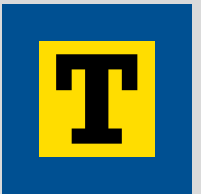
- End panel

| Article no. | Length | Max. load |
|-------------|--------|-----------------------|
| 84-Z-221120 | 120 cm | 200 kg/m ² |



Tobler Top Concreting Platform

Perform concrete work faster and safer.



Folding scaffolding bracket

All steel profiles are made of high-quality, hot-dip-galvanised S355 steel.

Quick, simple folding helps to save a large amount of transport volume.



- Folding scaffolding bracket

| Article no. | Designation | Length | Weight |
|-------------|---------------------------|--------|--------|
| 84-Z-350121 | Left scaffolding bracket | 120 cm | 26 kg |
| 84-Z-350126 | Right scaffolding bracket | 120 cm | 26 kg |



Integrated transport safety

The mechanism of the folded scaffolding brackets is a simple yet ingenious solution that locks the platforms during transport.

This integrated safety helps you save valuable time, and improves safety.



Tobler Top Concreting Platform

Perform concrete work faster and safer.

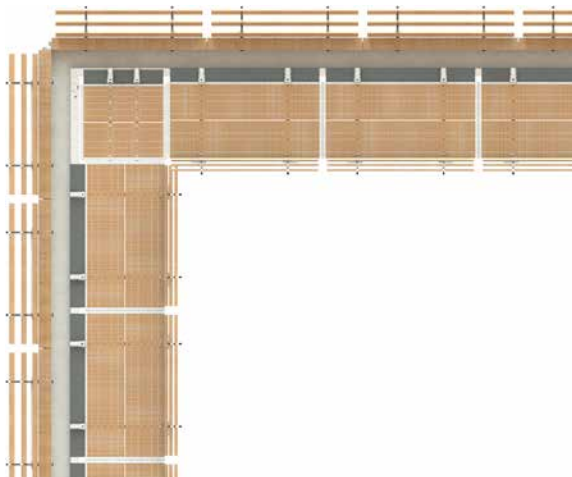
Corner and levelling platforms

Like our standard concreting platforms, our corner and levelling platforms are also equipped with guardrails having a folding mechanism.

They also come with an integrated edge protection to ensure durability and improve reliability.

- Corner and levelling platform

| Article no. | Length | Width | Weight | Max. load |
|-------------|--------|-------|--------|----------------------|
| 84-Z-221130 | 130cm | 120cm | 101 kg | 200kg/m ² |



Tobler Top Concreting Platform

Perform concrete work faster and safer.



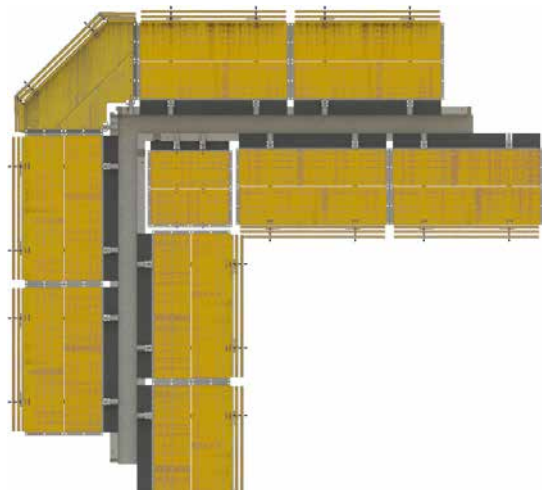
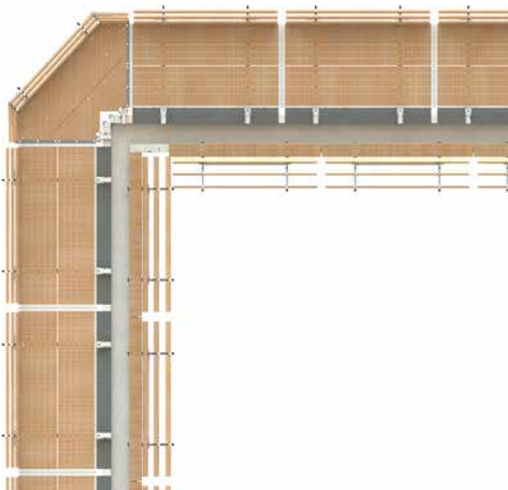
Outer corner platform

Functional integration with the edge protection that is integrated into the brackets contributes to the long service life of Tobler Top outer corner platforms.

The guardrails with folding mechanism are of the highest quality, making them a safe and reliable investment.

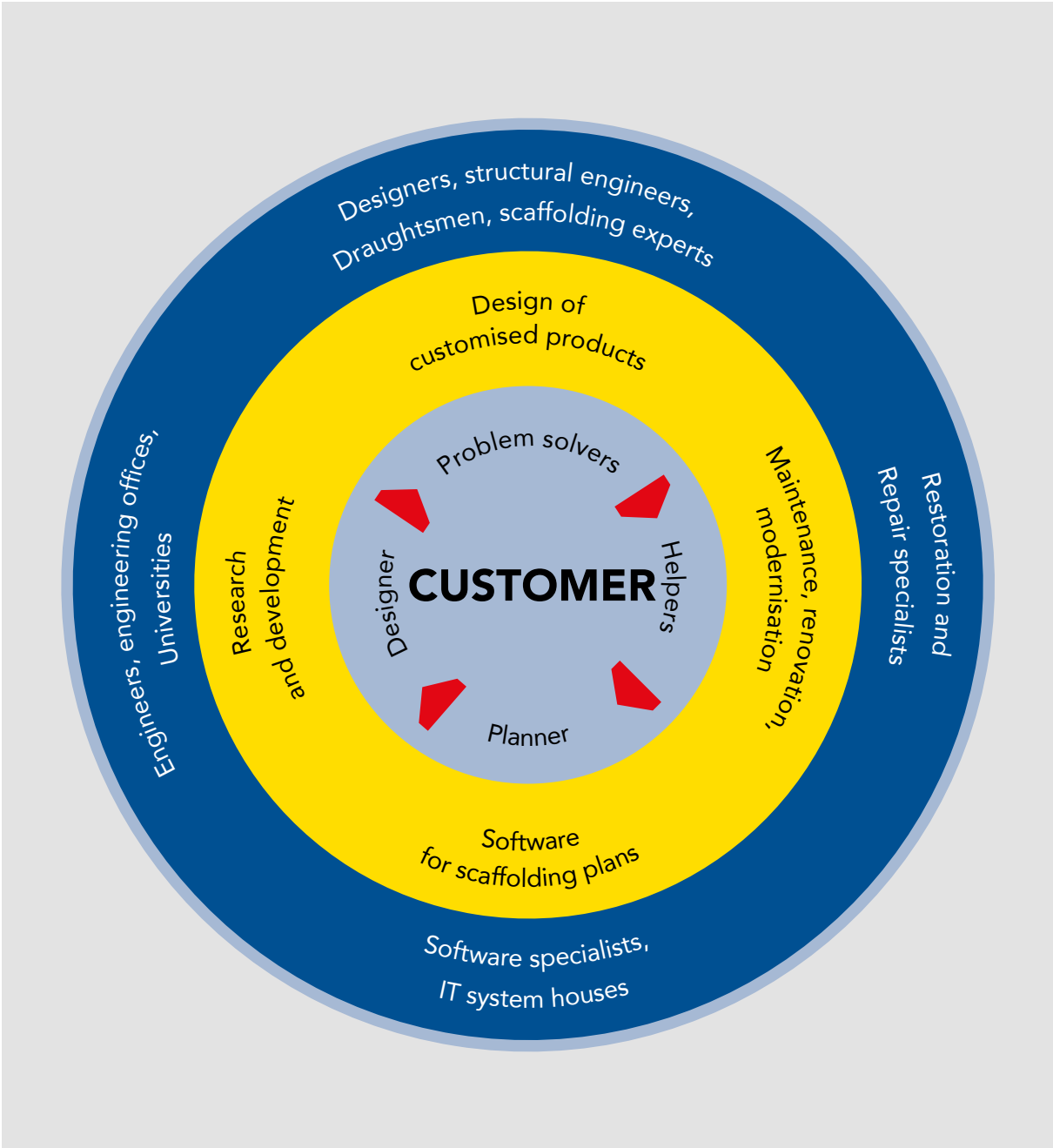
- Levelling platform

| Article no. | Length | Max. load |
|-------------|--------|----------------------|
| 84-Z-222235 | 120 cm | 200kg/m ² |



Tobler Top Concreting Platform

360° expertise for formwork.

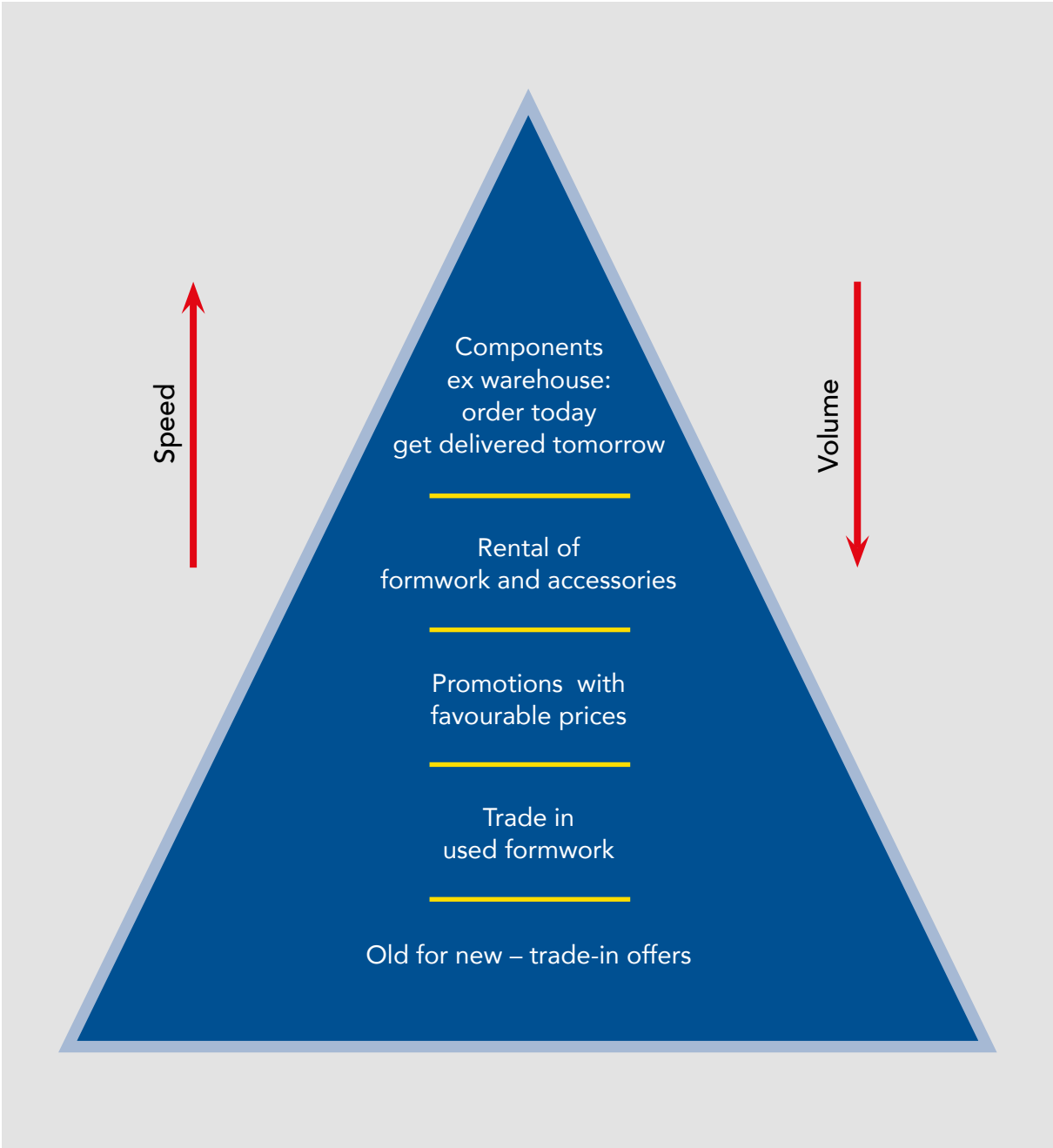


We will find the optimal solution for your problem.

We love challenges. Benefit from our know-how, which has grown over decades, and from our loyal team of experienced employees.

Tobler Top Concreting Platform

Ordering and financing.









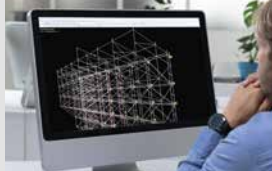


Benefit from attractive and interesting offers.

Our aim is to supply you quickly and directly.
We will be happy to provide you a personal offer.
Stay up to date with our newsletter.

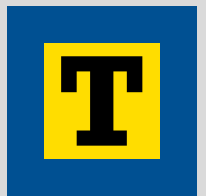
MATO Scaffoldings

Efficiency. Flexibility. Safety.

| | | | |
|--|--|---|---|
| <p>Facade scaffoldings</p> | <p>MATO 1 MATO 2</p> | <p>MATO 53 CK compatible with your existing scaffolding MATO 54 Lay MATO 62 Ple MATO 65 Hün</p> |  |
| <p>All-in-one scaffolding system</p> | <p>MATO 3 MATO 8</p> | <p>MATO Connect Road Bridge MATO Connect Bridge Beam</p> |  |
| <p>Roof systems</p> | <p>MATO Pro</p> | <p>MATO Pro Anti-fall protection MATO Pro Temporary roof systems MATO Pro Walkway roofing</p> |  |
| <p>Mobile scaffoldings</p> | <p>MATO R</p> | <p>MATO R Profi MATO R Pro MATO R One Man Tower MATO R Eco</p> |  |
| <p>Work scaffolding on construction sites</p> | <p>MATO T</p> | <p>MATO T Stair towers MATO T Cable bridges MATO T Ramps for site access MATO T Scaffoldings for Concreting and Reinforcement</p> |  |
| <p>Events</p> | <p>MATO E</p> | <p>MATO E Stages & Tribunes MATO E Event-Service/Support MATO E R & D</p> |  |
| <p>Accessories</p> | <p>MATO Z</p> | <p>MATO Z Scaffolding accessories MATO S Safety accessories MATO B Construction devices Tobler Logistics</p> |  |
| <p>Storage solutions</p> | <p>Tobler Storage</p> | <p>Tobler Cantilever Shelving Tobler Pallet Shelving Tobler Floor Special Shelving Tobler Lattice boxes / Steel boxes Tobler Pallets and Racks</p> |  |
| <p>Services</p> | <p>Tobler Services</p> | <p>R & D / Static calculations / CAD / Trainings / Customer solutions / Customized Solutions / Finance and Consulting / Second hand / Trade-in old for new</p> |  |

Tobler Formwork

Enjoying industrialized construction.



| | | | |
|--|----------------------------------|--|--|
| <p>Wall formwork</p> | <p>Tobler Wall</p> | <p>Tobler Top Tobler Manu Master Pro (Ringer) Master steel/ alu (Ringer) System 2000 steel/ alu (Ringer)</p> | |
| <p>Slab formwork</p> | <p>Tobler Sky</p> | <p>Tobler Deck Tobler Desk Slab Table / Kart Tobler Flex AluDEK (Ringer) DEKplus Slab Table (Ringer)</p> | |
| <p>Individual formwork</p> | <p>Tobler I</p> | <p>Tobler Rex Girder wall formwork Tobler Varia Circular formwork Tobler Project Special formwork</p> | |
| <p>Shoring systems</p> | <p>Tobler H</p> | <p>Tobler Tower Heavy-Duty Props Tobler T22 Load-bearing system</p> | |
| <p>Work scaffolding on construction sites</p> | <p>MATO T</p> | <p>MATO T Reinforcement scaffolding MATO T Ramps for site access, MATO T Towers / Cable bridges MATO R Pro / Eco MATO R One Man Tower</p> | |
| <p>Engineering</p> | <p>Tobler Kit</p> | <p>MATO 3 MATO 8 MATO Connect Road Bridge MATO Connect Bridge Beam</p> | |
| <p>Accessories</p> | <p>Tobler Accessories</p> | <p>Tobler Formwork accessories Tobler Construction devices Tobler Logistics Tobler Storage solutions</p> | |
| <p>Services</p> | <p>Tobler Services</p> | <p>Tobler Rent Tobler ForU Tobler Care Tobler Revalued</p> | |
| <p>Digital services</p> | <p>my Tobler</p> | <p>Tobler Formwork planner Tobler Engineering</p> | |



At home in Switzerland – anchored in Europe

We are constantly driving forward the internationalisation of our product range.



**Order
& advice**
schalung@tobler-ag.com
+41 71 886 06 37

Copyright 2023 Tobler AG / 06.2024

« Our Swiss-developed Tobler Top concreting platform sets new standards in deployment time and speed. »



Mario Page

Director Export
International
Formwork & Scaffolding

